

# Alaska Department of Fish and Game

Habitat Section  
Southeast Region



**191-20-13400-2033-3005-4035**

**ADDITION**

**Water body name:**

**Survey date:** 7/19/2024

**Quad:** Bering Glacier A-3

**Species & Lifestage:** CO

**Upper Reach Latitude:** 60.003023 **Longitude:** -141.798397

**Survey crew:** NJ, CD, DK

**Lower Reach Latitude:** 60.001025 **Longitude:** -141.793149

**Findings:** We surveyed this stream using a backpack electrofisher and GPS and captured juvenile coho salmon. This stream needs to be route corrected from its confluence with Stream No. 191-20-13400-2033-3005 (Lydick Creek). Channel is incised in some locations from previous logging activities and is approximately 10 ft wide with gravels, pools, and large woody debris spanning the channel. Survey ended due to time but fish habitat likely continues (Table 1; Figures 1–3).

**Recommendations:** Correct Stream No. 191-20-13400-2033-3005-4035 to reflect the field verified stream path and extend the upper extent in the anadromous waters catalog for rearing coho salmon up to waypoint 627 (Figure 4).

**Nomination:** Pending

Table 1.–191-20-13400-2033-3005-4035 addition survey data.

Waypoint	Latitude	Longitude	Notes	Stream Width ft	Stream Substrate	Habitat Features	Gradient %	Sample Effort	Sample Results
620	60.001588	-141.796379	Stream is not correct location on map. Good fish habitat with gravels and woody debris and little pools. Stream approx 5-10 ft wide. Previous logging operation near stream left it incised. Will fish upstream a bit to see		Small Gravel		2-4	EF	3 CO
621	60.002031	-141.796628	Waypoint for update for tracking purposes.						
622	60.002234	-141.797057	This may be the main channel and AWC is off. Will keep investigating.						
625	60.002433	-141.797322	Good habitat on main channel. Continuing to follow to correct route/extend.					EF	2 CO
626	60.002710	-141.798338	Fish habitat likely continues.				2-4	EF	2 CO
627	60.003026	-141.798405	1 ft water fall over log here. Likely not passage issue at higher flows. Coho caught right above falls. Ending survey here due to time but fish habitat likely continues.		Small Gravel			EF	2 CO



Figure 1.–Juvenile coho salmon caught at waypoint 626.



Figure 2.–Small waterfall, looking upstream at waypoint 627.



Figure 3.–Channel at waypoint 625, looking downstream.

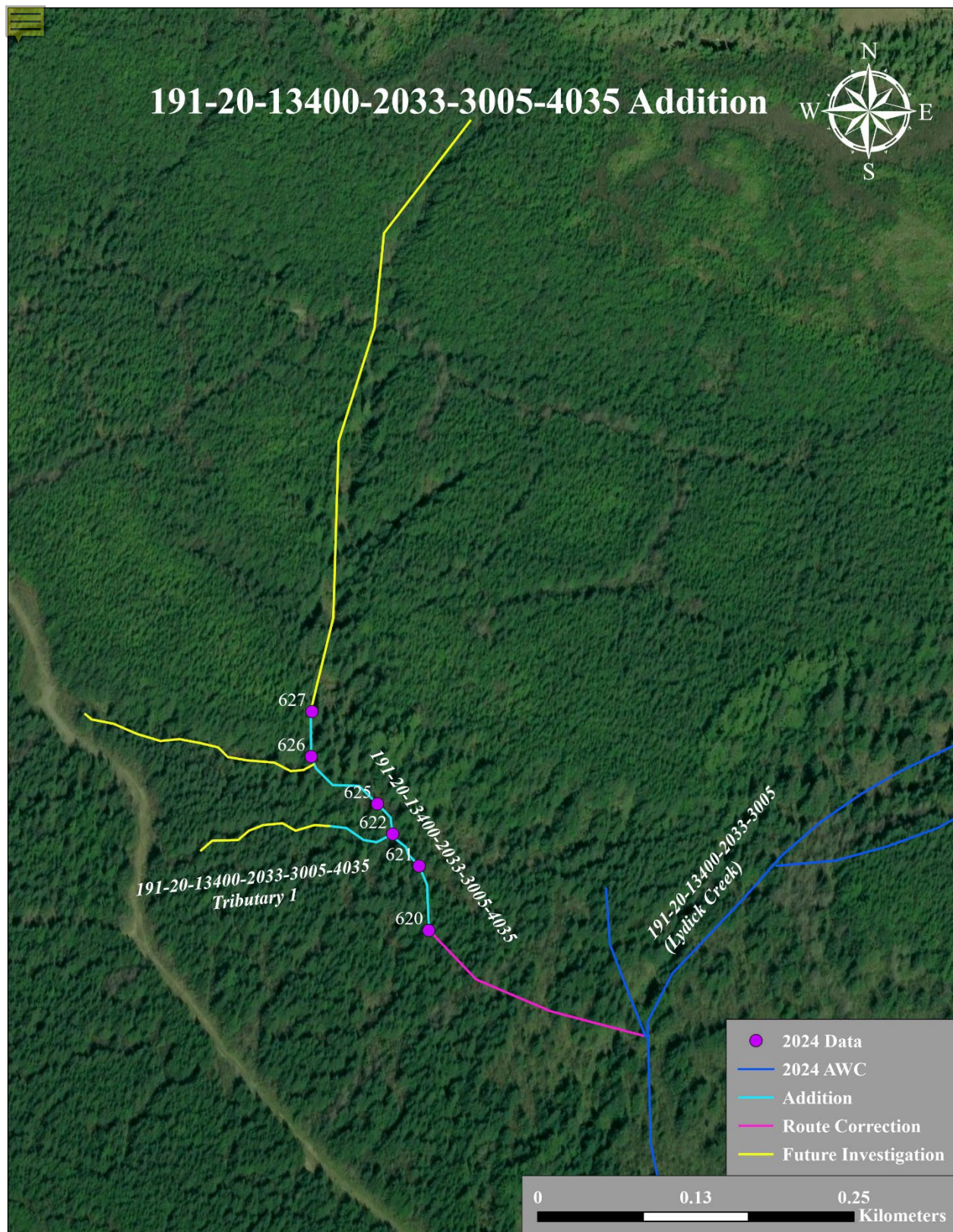


Figure 4.—191-20-13400-2033-3005-4035 addition map.